

One of the many small patients of the hospital ship, S.S. HOPE anxiously awaits her arrival. HOPE is one of the 17 agencies participating in the NHA-ISA drive, beginning March 16.

Fund drive will start soon

Better health for everyone . . . and a gift from all. These are the goals of the joint National Health Agencies and the International Service Agencies campaign coming up soon.

The NHA, you will remember, is an association of agencies which fight disease and disability through work in the fields of research, education, and rehabilitation of the physically and mentally ill.

The ISA's four component agencies are devoted to improving the health and education of people throughout the world.

There will be no "suggested" donation amounts, and you need

not give to both agencies in order to be considered responsive. You may designate the agency or agencies which you wish to back, or simply make a blanket donation, to be divided as the ISA or NHA sees fit.

Last year 83% of all MSC workers contributed something to the campaign. Naturally we'd like to do as well, and better this year.

The campaign will last one week, beginning March 16. The brochures and contribution envelopes which you will be receiving describe the participating agencies.

Please, do give.

White Sands scheduled for mothballs

The NASA White Sands, New Mexico Test Facility is scheduled for transfer to a stand-by status in June of 1971.

Mothballing could involve a reduction in the number of employees from the present 641 to a caretaker force of about 50 after completion of the scheduled 1970-71 tests of the Apollo lunar module and the Skylab Program command and service modules.

AAP name changed

NASA Headquarters has announced that the Apollo Applications program has been renamed "Skylab".

Skylab program elements remain identical to those of the old AAP, with a first launch in late 1972 of a ten thousand cubic foot manned work shop into a 235-mile high Earth Orbit.

Reservations needed for Easter Egg Hunt

Make plans now to bring your children to the largest Easter egg hunt that has ever been held at MSC. The EAA has great plans for the activity area behind buildings 221 and 222, where, on Saturday March 21, children ages 2 thru 8 can set out after the "Golden Egg."

Four hunts are scheduled: two year olds—9 am; three and four year olds—10:30 am; five and six year olds—1:30 pm, and seven and eight year olds—3:00 pm. Prizes will be given to the finders of the "Golden Egg", and to those finding the most eggs in each group.

Each child will get, as a minimum, a basket, five eggs (hard-boiled), and a chocolate bunny. A clown will be on hand to entertain, and a beverage will be served.

The cost will be \$1 per child. Tickets will go on sale March 9 through 13, and can be purchased only through your EAA representative. The tickets will have a stub which must be filled out at the time of purchase, with age of child, and returned to the ticket

Saturday, March 7, from 11:38 am CST until about 11:41½, night will fall across the town of Miahuatlan, Mexico.

A scientific team from MSC's Space Physics Division will be there, along with scientists and newsmen from throughout the world to study and record the spectacular phenomenon: a total eclipse of the sun.

The MSC group will have their telescopes, cameras and associated equipment set up in the Mexican state of Oaxaca outside the town of Miahuatlan. Miahuatlan, some 300 miles south of Mexico City, has relatively clear skies and affords the best location to view the eclipse. It is also the geographic point where the total eclipse has its longest duration, about 3½ minutes.

The main scientific objective is to gain information on the Sun's corona, the fiery outer envelope of the Sun, normally obscured by the Sun's brightness. MSC also hopes to obtain information on the family of faint comets predicted to be found near the Sun, determine distribution of the coronal radiation and of the sunlight scattered by the Earth's atmosphere.



Kenneth D. Cashion checks out some of the equipment which MSC scientists will be using March 7 to view one of Nature's most spectacular phenomenon—a total eclipse of the Sun.

The eclipse will be total in a band about 85 miles wide, running from the southwest (in the Pacific) across Mexico, along the eastern seaboard of the U.S. and northeast over Nova Scotia. The shadow caused by the eclipse will first touch land on the west coast of Southern Mexico, near Puerto Angel, pass over the isthmus of Mexico, the Gulf of Mexico, across Florida near Apalachicola and along the eastern seaboard leaving the continental U.S. at Norfolk, Virginia.

The MSC expedition, under the supervision of Dr. Robert Kovar, Chief Scientist, traveled to Mexico via truck convoy with 2½ tons of equipment. The group will use eight telescopes (3 to 7") and an

(Continued On Page 3)

Thompson chief of Space Shuttle Program Office

A Space Shuttle Program Office, headed by Robert F. Thompson has been established. The new Office is still in the formative stages. At the moment, Mr. Thompson says, his Office is small, and is devoting itself first to understanding the needs of the Shuttle Program.

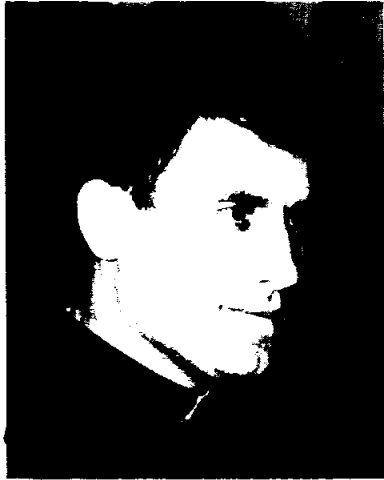
Replacing Thompson as Manager of the new Skylab Office (formerly AAP), is Kenneth S. Kleinknecht. His Deputy is Clifford E. Charlesworth.



Astronauts Enge, Mitchell, Shepard, and Cernan trudge across the volcanic lunar-like landscape of the area surrounding the Pinicate mountain range, giving the MET (Modular Equipment Transporter) a workout in the field.

It's OK if you're barefoot

Father Adolfo Vasquez is doing his part for the space effort. A Spanish missionary to the Indians of Guatemala for the past 6 years, he was so interested in the first moon flight that he set off through



Father Vasquez

three miles of jungle to get to the nearest T.V. set to watch the Apollo 11 crew.

He knew that his Indians objected strenuously to the moon landing. The Moon is sacred to the Indians of Chichicastenango, as it is to many peoples throughout the world. The thought of men tromping around on hallowed ground was an abomination to them.

In answering their objections, Father Vasquez achieved harmony between the old beliefs and modern reality—even though he did have to tell a fib: he told them that while it was true that men did put their feet upon the Moon, nothing was defamed. The astronauts, he told them, first took off their shoes.



Barbara Lerdon introduces the first of 14 sessions for secretaries, on the behavioral aspects of being a secretary. After a televised program from Washington, the girls break into groups for discussion, role playing experiments, and evaluation of the day's topic.

245

years of service

30 years



Frank Gammon

25 years



Eziaslau Harrin



Edward Petrash



Ted Skopinski



Edna Hamilton



Clyde Middleton



Jerry Hammack



Harle Vogel

10 years



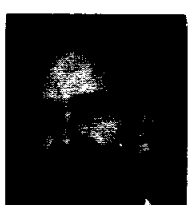
F. DeVos



R. Mayo



W. Guy



L. Eickmeier

Secretaries learn through electronics & seminars

Training's latest boons for the working girl are two courses on the ins and outs of being a secretary who is a professional assistant, not a clerical tag-along.

One course includes a televised program from Washington on the "Behavioral Aspects of Secretarial Practices". The course is entitled "From Nine to Five", and tells you all those things they don't teach in shorthand and typing; how to get along with "The Obnoxious Playboy", "The Know-It-All", "Mr. Brutally Frank", and hosts of others.

Televised vignettes demonstrate certain types of "minimum behaviour" to show both what secretaries could reasonably expect of their bosses, and what the bosses should be able to expect from them. Bosses may be interested to know that the girls came up with lists of their own about what helps make a man a pleasure to work for: tact, appreciation, neatness, trust, willingness to back his secretary up when she is acting within the limits of her job, and an effort to give clear directions about the job at hand.

The first of the 14 weekly sessions was held last week, with 50 girls and their supervisors there to watch the well-known foibles which the TV actors depicted. Future programs will deal with such things as "The secretary as a professional person"; the importance of communicating clearly; the effect of appearance on both the transmittal and reception of communications; and how to walk and sit, especially in short skirts!

Discussion leaders for the course are Barbara Lerdon, Billie Schmidt, and Marilyn Bocking.

The second approach to broadening secretarial awareness is a series of eight seminars. John Hodge, Manager of the Advanced Missions Program Office, presented the first of these seminars last Wednesday.

The seminars have been designed to give the Center's secretaries an awareness of MSC's future programs, and an insight into organizational and managerial concepts of MSC's top management.

Mr. Hodge spoke about such things as his Office's structure, function, and its relationship to other offices at MSC, other centers, and Headquarters, as well as

upcoming programs, the problems of being a program office, and the environment within which his staff operates.

We're glad to see that the girls who perform such a vital function in carrying out the Center's work have been given an opportunity to understand some of the constraints which influence the work they and their bosses do every day.

Announcements

MSC Duplicate Bridge Club: Recent winners of MSC Duplicate Bridge Club tournaments are as follows:

January Novice Game: Dave and Helen Hixon.

Invitational Tournaments (Tuesday night—7:30 PM): 1/27, Joe Doke/John Herrmann; 2/3, Bill Schmidt/Don Larson; 2/10, Howard Smith/John Herrmann.

Open Tournaments (Sunday Night—7:00 PM): 2/1, Carl and Norma Parkinson; 2/8, D. E. Leighton/Joe Welfe.

Beginner bridge classes are being formed by John Herrmann, ext. 2395. Beginner and intermediate class information can be obtained by calling Jim Raney, ext. 3281.

Fencing Club organizing: pros and novices alike will be welcomed into this new organization in the MSC area. Men and women from 16 years on up can learn, brush up, or show off their skill. What better way is there to work off aggression, improve reflexes, and keep in shape? An investment of about \$25 for equipment will take care of the financing. Call Martin James at 488-3530, x2603.



Last Friday, Joseph Beaudion received the first certificate ever presented for successful completion of the Junior Apprentice Program at MSC. As a result of his year of training with Tech Services, he is now qualified for advanced training in structural steel welding and will move to a job in commercial shipbuilding.

Here Jack A. Kinzler, Chief of the Technical Services Division, presents congratulations and the certificate of completion to Joe.



Their hobby's not for the superstitious!

Can you imagine 6 tons of spears, shields, Zanzibar chests, Makonde carvings, hippo teeth, ceremonial masks, animal skins, and Katanga bride-price money? No? Well stop over to see Dr. Alan Buck this weekend. The Bucks have arranged these artifacts and many more, for friends and fellow workers to see at an open house this Saturday and Sunday.

Dr. Buck and his wife Pamela spent 2 years in Uganda, where Dr. Buck taught physiology at the University Medical School in Kampala. Living costs were low, so at the end of two years, the Bucks found themselves with a tidy bundle of cash.

The officials in Uganda would not allow such a sum of money to leave the country. The Bucks figured "OK, if the mountain won't come to Mohammed, Mohammed will come to the mountain." They took their nest egg and set

off, as amateur ethnographers, to convert Uganda shillings into African artifacts, which the government does approve for export.

Their purchases include some lovely ivory figurines, numerous ceremonial masks, some soapstone carvings, ebony, a 6' tall wooden giraffe, and much more.

Dr. Buck is currently with the Environmental Physiology Lab at

MSC. He and Pamela will be at home all day Saturday and Sunday. They'll be glad to show you their collection. Their home is located in Swan Lagoon, across from MSC, at 2515 Lazy Lake Drive.

Credit union offers prize

Write a slogan for the 1970 International Credit Union Week and you might win \$50. All C.U. members are eligible. Write your entry in six words or less, describing how credit unions are meeting the challenge of the "Soaring Seventies". Be sure to include your name, address, and the name of your credit union. Mail your entry to: Public Relations Department, CUNA International, P.O. Box 431, Madison, Wisconsin, 53701.

We care, We share!

Superior Achievement



Richard Mayo
Crew Systems

Your Job in Focus

The Personnel Division is frequently contacted concerning vacant positions in other Federal Agencies and in private industry. Listings of these positions are posted on the bulletin board outside of Room 241, Building 2.

Included are:

Photographer (Medical) - GS 11 - FAA Aeronautical Center, Oklahoma City, Okla.

Computer Programmers and Analysts - Texas Rehabilitation Commission, Austin, Texas

Customs Inspectors and Agents - 1,400 positions - Treasury Department's Bureau of Customs, Southwest area and New York City

Medical T. V. Producer and Communications Systems Design Engineer, Yale - New Haven Educational Corporation, Connecticut.

Information on any of the above positions may be obtained from the Personnel Division, x 2135.

Co-Op of month



Ira Richter

Ira, a Sophomore at Georgia Tech, is currently assigned to the Pyrotechnics Section of PPD. His mature judgment and initiative in his current work assignments have been exceptional. His ability has been largely responsible for the completion of design, manufacture of tooling for test models, and the current advanced status of his project.

Eclipse

(Continued From Page 1)

assortment of 16 mm motion picture, 35 mm and 70 mm cameras in carrying out their experiments.

Project scientists state that the results of their observations will provide a better understanding of the Sun and the properties of the interplanetary space. In addition the information gained from these experiments will provide a large amount of ground-based data for use by the solar Apollo Telescope Mount experiment scheduled for use in the Apollo Applications Program.

ROUNDUP

NASA MANNED SPACECRAFT CENTER HOUSTON, TEXAS



The **Roundup** is an official publication of the National Aeronautics and Space Administration Manned Spacecraft Center, Houston, Texas, and is published every other Friday by the Public Affairs Office for MSC employees.

Editor Sally LaMere
Staff Photographer A. "Pat" Patnesky

Roundup Swap-Shop

(Deadline for Swap-Shop classified ad is Thursday of the week preceding Roundup publication date. Ads are limited to MSC civil service employees and assigned military personnel. Maximum length is 15 words, including name, office code and home telephone number. Send ads in writing to Roundup Editor, AP3.)

REAL ESTATE

Heavily wooded lot, Oak Hollow subdivision, Dickinson, 90x200, x5441, Mancuso.

3-2-2 brick, 1/2 acre lot, Alvin, built-ins, central a/h, equity & assume 6 1/2%, x5271, or 658-4855.

Rent: 3-2-2 brick, Swan Lagoon, central a/h, all built-ins, carpet, fenced, trees, available March 10, \$220/mo, with lease, Tremant, 591-3885.

4-2-2 Od English, 18327 Blanchmont Lane, Nassau Bay, x6203, Small, or 591-2315

80' x 200' wooded lot, Dickinson, all utilities, \$4500 will finance, x3286, Plauche, or 474-2660

3-2-2 Mramar, screened patio, newly carpeted living area, central a/h, extra nice, x3286, Plauche, or 474-2660.

Rent 2-1 1/2-2, CLC townhouse, patio, storage area, washer, dryer connections, \$185/mo, available immediately, x3661, Deans, or 488-4009.

WANTED

House cleaning help one day a week, very close to exit 15 (Edgebrook), Gulf Freeway, convenient to drop off and pick up on way to MSC. Call 946-5849, evenings, Briggs

Small tent camping trailer, sleep 4, x3516, Jones

Exerciser, 471-2856, Pech

Ride from Clear Lake City (Chateau NASA apts. or Camino South Shopping Center) to MSC, near bldg 440, begin work at 8:30 am, return ride not necessary, x2918, Eppright

Girl to share 2-bdrm beach house, \$55 month, must like dogs, x2174, Ann

"Roundup", Volume 1, #7, January 24, '62, call x2271, Robie

AUTOMOBILES

67 Camaro, excellent, \$1295 firm, 741-0095, Sylvia.

64 Impala 4-door hardtop, V-8, air, automatic, power steering, excellent condition, x7351, McCown, or 471-0716

66 VW, radio, heater, leatherette, excellent condition, \$895, x2749, Brown, or 471-0066

61 Pontiac Catalina, V-8, automatic, a/c, power, radio, heater, \$325, x4647, Tremant, or 591-3885

54 Chevy, runs; new brakes, generator, plugs, points, \$35, 487-2266, Ward

62 Ford pick-up, 1/2 ton, 6-cyl, heater, standard trans., heavy-duty factory rear bumper, clean, drives nicely, sell \$325 cr trade for car, motorcycle, or ? Wright 877-3059

60 Falcon SW, good work car, \$200, Springfield, x2051 or 488-4373

69 Corvette convertible, green, 350 engine, automatic, AM/FM, power steering, positraction, radial tires, 932-5622, Cobb

64 MGB, white with black leather upholstery, radio, console, valley instruments, tonneau, new tires, good condition, \$900, Samouce, 488-0406

63 Cadillac sedan DeVille, all power, excellent condition, priced for quick sale, x6203, Small, or 591-2315

63 Olds, 4-dr, power, air, good condition, \$400, 932-4216, Oldham

66 VW, radio, heater, leatherette, excellent condition, \$50 under Blue Book, x2749, Brown, or 471-0066

63 Mercury Monterrey, 4-dr-sedan, 3 new tires, \$250, GR1-4387, Locher

64 Cadillac, 4-dr. sedan, excellent, AM-FM

fiberglass tires, tilt wheel, other extras, HU-7012, Whipkey

66 Malibu convertible, 4-speed, air, power, excellent condition, \$1300, x3001, Wylie, or 591-2798

67 Sunbeam Alpine, 591-3850, Payne

65 Chrysler, 2-dr hdt, am-fm, air, power, \$800, x4751, Tolin, or 479-1408

64 Chevy BelAire station wagon, V8, automatic, power, r/h, new shocks, \$675, x7332, Chesnutwood, or 944-6893

64 Barracuda, r/h, 3-speed with Hurst shifter, very reliable with good gas mileage, excellent for second car, \$750, 877-2243, Randy

66 Chevelle Super Sport 396 convertible, yellow, black top, automatic, power steering, factory air, \$220 under NADA price, x4957, Fred, or 487-3637 after 6 pm.

65 Mustang, V8, automatic, power, air, \$895, 932-3119, Fries

65 Buick Special, r/h, air, automatic, good tires, \$850, x4721, or 479-2672, Bailey

PETS

Lhasa Apso puppy, black female, born Jan. 12, x4126, Williams, or 487-2314.

AKC registered Basset pups (6 wks), tricolor or apricot/white, wormed & shots, reasonable, background champions, 487-3158, Rust

MISCELLANEOUS

Antique (late 1800's) hand-painted dinner ware, service for 12, Hutschenreuther porcelain china, \$200, 877-4198

Tent trailer, stove, heater, 3 bed rolls, lantern, griddle, etc., \$250, Pech, 471-2856

Lawn mower, Toro 21" gas-powered rotary and hand edger, need minor repair, \$25, 488-

4459, Lamoreux

Officer's Mess Dress, size 41L, \$60; also officer's overcoat, size 42, \$15, Pittman, 488-1243

Stanley 6-piece Spanish bedroom suite, pecan, never used, \$350, Payne, x2926 or 485-3821

Two dark rose living room chairs (a pair), excellent condition, 591-4275, Davis

Full Clear Lake Country Club membership, 1/2 price or best offer, HU8-0094 after 5pm

8' class A hydroplane, fiberglassed bottom and seams, new paint, \$55, 488-5805

7' sofa, \$50; 6-drawer walnut dresser, \$35, 488-0624

RCA solid state 40-watt AM-FM stereo, studiomatic changer, 6 speakers, 50" Mediterranean console, perfect, \$225, Cole, 591-4408

Double bed headboard and frame, antiqued white, contemporary styling, \$15, 488-3238

AM/FM stereo, automatic changer, walnut cabinet, w/fine tuning & reverb, audio tape plug-in facility, extra speaker, albums, \$150, Werlein, 488-2351

Sextant, Davis Mark II, never used, ideal for yachting, \$10, Goodrick, x4926

Girl's 26" Schwinn bike, \$10; trailer wheel with new 4.80x4.00 tire, \$8, x7351, McCown, or 471-0716

Early Polaroid camera, model 110A with case and accessories, \$35 or best offer. Cost about \$150, has had little use, 877-1141, Lindsay

Buffet, beautifully refinished, 60" long, 36" high, 20" deep, 2 drawers + 2 compartments, \$40, Teasdale, 482-7801.

Living room chair, royal blue fabric, traditional style, perfect condition, \$35, 488-4372

Left-hand golf clubs, Spalding Personal model, 1-3 woods and 3,5,7,9 irons, \$30, Block, 932-5075

Guitar lessons, specializing in folk and classical technique, \$10/mo, no children, 649-4872, Gorman

14' sailboat, fiberglass, cabin, 2 bunks, equipment includes anchor, compass, electrical system, cushions, etc., \$1000 with trailer, x2848, Cree, or 487-1158

Portable typewriter; girl's bicycle exerciser; regular bed, x6201, Driscoll, or 591-4652

Recliner chair, green, \$50; Early Am. drop-leaf end table/Sprague-Carlton, \$50; all like new, x3661, Deans, or 488-4009

Baby stroller, \$75; spinning wheel, large porch type, \$20; pine rope bed, antique, \$55; glass cans, \$3 each; x3541, Minar, or 877-3028

Pink formal gown, never worn; long blue & white formal, worn once; 2 cocktail dresses, one yellow, one blue, like new, assorted other dresses all sizes 7-9, excellent condition, 488-3136, Nugent

Walnut dresser, \$30; refrigerator, \$25; 7' sofa, \$50; kitchen table and chairs, \$30; 488-0624

16' fiberglass IMP, folding top, reclining seats, 80 hp Evinrude, used little, reasonable, 479-2672

Good piano, \$195; good French Provincial divan, \$60; girl's bike, \$15, x4721, Bailey, or 479-2672

RFP's go out for environmental study

What color would you want your room painted if you had to live with it for ten straight years? Would you want the temperature to remain constant all the time? How big a space would you need, to keep from going stir-crazy?

NASA intends to find out the answers to questions such as these. 14 firms have been invited to submit proposals for an engineering study which would compile just these kinds of information. The successful bidder will be asked to suggest an environment in which the "average" person could work, sleep, eat, and relax comfortably and efficiently over long periods of time. He will prepare a handbook which will treat such criteria as architectural design, compartment utilization, volume, lighting, acoustics, tem-

perature, and color for extraterrestrial living environments.

The firms competing for the contract will be asked to study three related space living situations: space stations, logistic spacecraft, and planetary space vehicles. The space station study will provide for crew sizes ranging from 6 to 100 men, living for up to 10 years in a volume of about 400,000 ft.³

Logistic spacecraft will be planned to support 2-12 crewmen in about 10,000 ft.³ for up to 7 days.

Planetary space vehicles will be required to sustain 6-12 crewmen for as long as 1,040 days, in up to 30,000 ft.³ of living area.

Data related to these questions has already been generated from past space flights, from Arctic and Antarctic stations, from submarines and underwater oceanographic research facilities. The contractors will be asked to explain how they would use this data and/or compile further data into a handbook, and what the cost to NASA would be for contractor effort in developing the data.

Proposals for the study contract are to be submitted by March 9, 1970.

Bay Area YMCA Program

Swimming, camping, crafts and clubs will be available this year to boys and girls in the Bay Area. Join before March 1 and save \$10 to \$20 over "late registration" rates. Call Jim Bodmer, x3232, or the YMCA, 488-4010.

Visitors to MSC

see anyone you know?



Witold Malcuzyński, Concert Pianist



Donald O'Connor



Wernher von Braun



Members of the U.N. Committee on the Peaceful Uses of Outer Space are shown as Center Director Robert Gilruth welcomes them to MSC.

Distribution of Apollo 12 rocks was lots different!

The release procedure for the Apollo 12 lunar samples was much less formal than for the first moon rocks!

Distribution of 28.6 pounds of lunar material, in the form

of rocks, chips, thin sections, and fine material (dust), began with most of the samples being sent by registered mail and diplomatic courier. Some of the scientists still prefer to receive

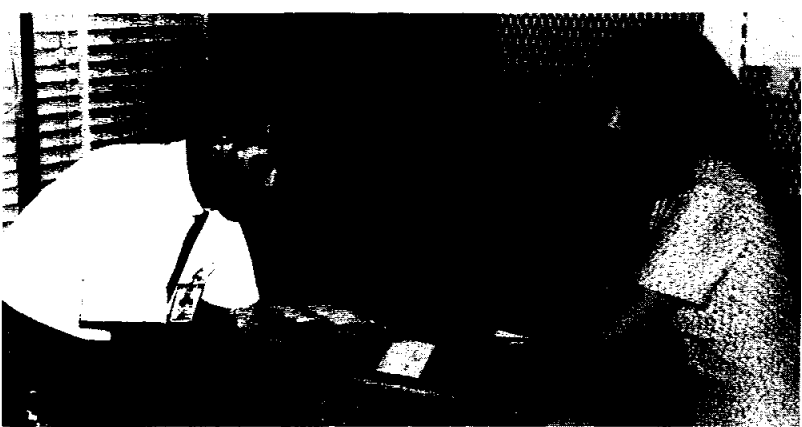
their samples personally, by coming to MSC.

The principal investigators will be asked to make a report of their findings at the Lunar Science Conference scheduled to be held in Houston in January of 1971.

Preliminary examination at the Lunar Receiving Laboratory has revealed that the Apollo 12 material has characteristics similar to the samples returned on Apollo 11. Mineralogically, the samples contain the same major minerals (Pyroxene, plagioclase, olivene, and ilmenite) as found in the samples returned by the Apollo 11 crew.

Potassium-Argon age dating, conducted during the preliminary examinations at the LRL shows the Apollo 12 samples to be about 1 billion years younger than the age of the Apollo 11 samples determined by the same method. Other tests revealed the Apollo 12 samples to have organic content somewhat less than that found on Apollo 11 samples.

Of the material distributed to scientists, about four pounds will be destroyed in the course of the planned experiments. The remaining 23.7 pounds of sample material will be returned to NASA.



Ursula Nuechtern and Bill Partridge, of the Mail and Records Branch, process the Apollo 12 lunar samples being mailed to some of the scientists designated as Principal Investigators of the Apollo 12 moon rocks.



Children from the grammar school in Sonoyta, Mexico crowd around the Apollo 14 astronauts, who take a minute from their geology field trip to say hello.



Alexander deSeversky

Famed for his contributions as an aeronautic engineer and government representative at the bomb tests at Bikini in 1946, Alexander deSeversky is also a noted inventor. He invented and designed the universal landing gear for seaplanes, designed and built all-metal amphibious aircraft, invented the first fully automatic synchronous bombsight.



Marty Mim Mack
March of Dimes



Fulton Battise, the new Mikko Choba (First Chief) of the Alabama-Coushatta tribes, stopped off at Colonel Stafford's office during his recent visit to MSC.



"East" football team, during break from practice for the East-West game.