

Advance Information on 1966-67 Programming

Star Trek



NBC TELEVISION NETWORK





Star Trek

According to recent scientific estimates, the number of stars in the universe is so numerous that if only one in a billion of these stars is a "Sun" with planets and only one in a billion of all these planets is of Earth size and composition, the Universe would still contain something like three million worlds capable of supporting intelligent life similar to our own.

As the Apollo moon shot moves steadily from the drawing board to the launching pad, STAR TREK takes TV viewers beyond our time and solar system to the unexplored interstellar deeps in a full-hour adventure series. Each week the home screen audience will be invited to join the men and women aboard the United Space Ship Enterprise, as this huge star cruiser searches out safe landfalls in space.

THE U.S.S. ENTERPRISE AND ITS MISSION

The *U.S.S. Enterprise* is a cruiser-size star ship displacing 390,000 tons and manned by a crew of 400. Her spacious decks encompass a bridge, control rooms, crew quarters and many science labs and technical departments, along with commodious passenger accommodations and sufficient cargo and storage space for voyages of long duration. The *Enterprise's* mission includes scientific investigation and reconnaissance of previously unexplored worlds; providing aid and supplies for Earth colonies; diplomatic courtesy calls on alien civilizations; and the enforcement of laws regulating commerce with the Earth colonies.

Although the *Enterprise* represents a remarkable scientific and technological achievement of the approaching era of intergalactic travel, the main dramatic focus of STAR TREK will be on the ship's captain, crew, passengers and the intelligent beings (human or otherwise) encountered in her travels. In the manner of every successful piece of speculative fiction from the classics of Jules Verne, H. G. Wells and Aldous Huxley to the work of such current masters of the art as Ray Bradbury, Isaac Asimov and Kingsley Amis, the STAR TREK storylines will stimulate the imagination without bypassing the intellect. While speculating in a fascinating way about the future, the series also will have much to say that is meaningful to us today.

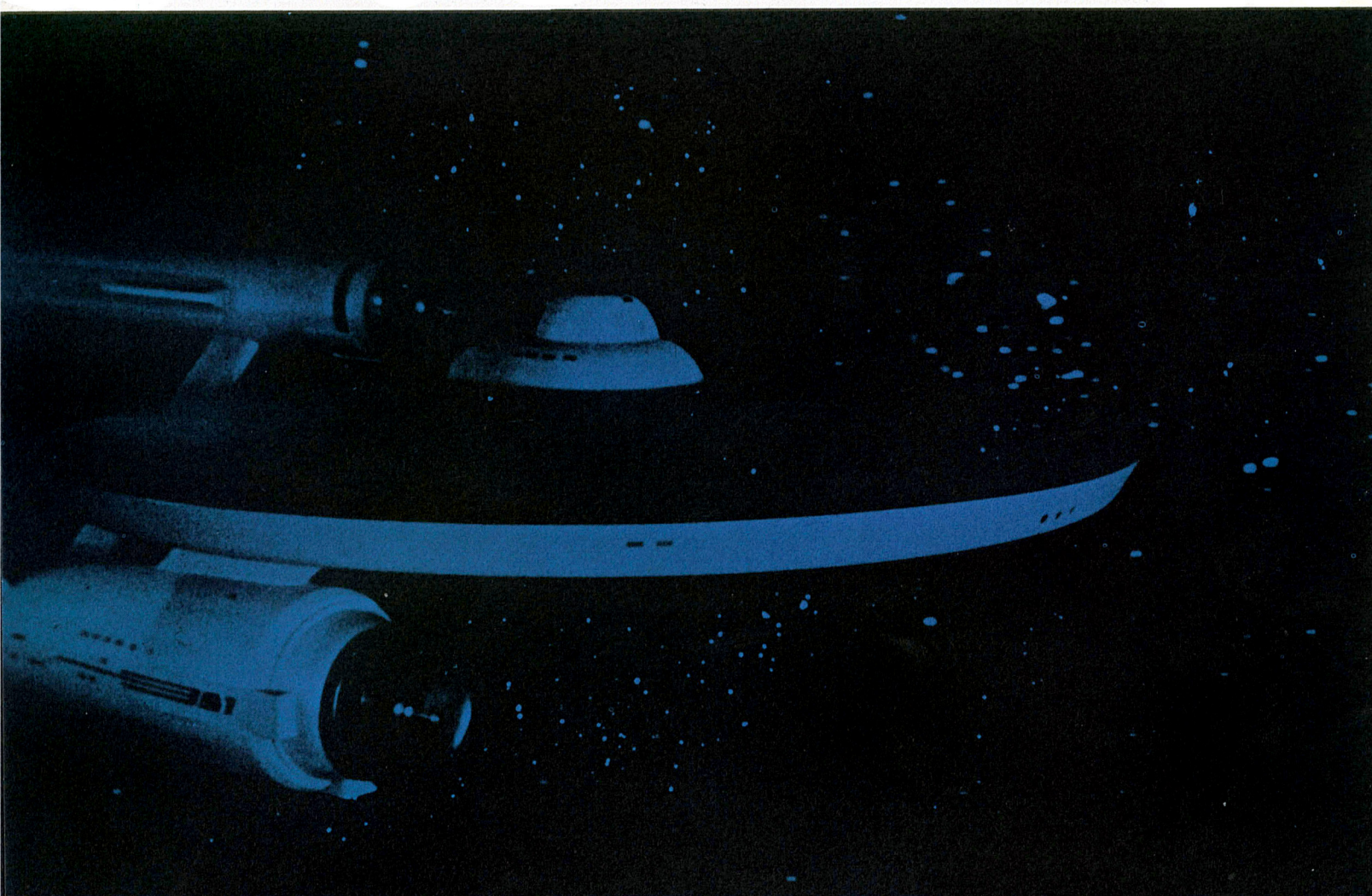


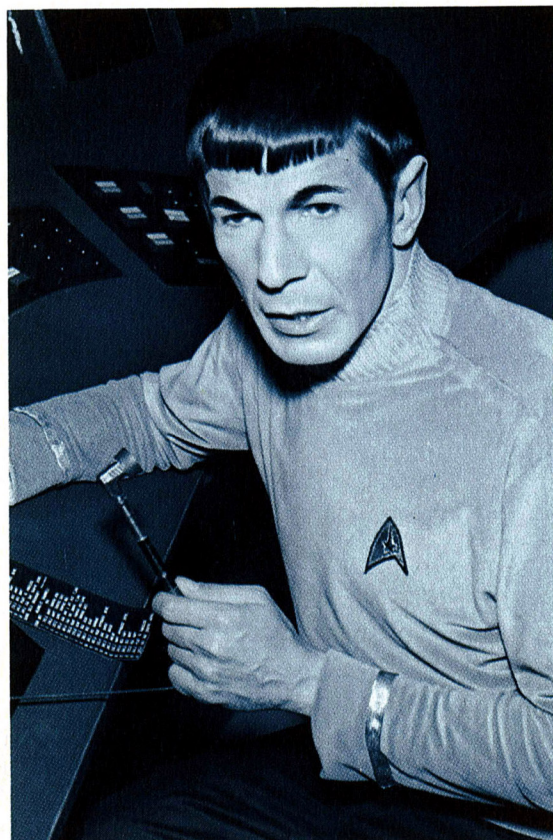
CAPTAIN JAMES KIRK of the U. S. S. Enterprise

A Space Academy graduate, Captain James Kirk has learned to accept the loneliness of command as he has rapidly climbed the ladder of promotion, although he never will learn to like the loneliness his post brings. Starship command is the most important position a man in the Space Service can hold, since he alone can and must make decisions in his contact with other worlds that can affect the future course of civilization throughout the Universe. So far, James Kirk has proven himself equal to this awesome responsibility. A strong, capable, highly intelligent man in his mid-thirties, Kirk is a born leader, who has trained himself to walk the tightrope between friendship and authority without losing his sense of humor or compassion for others.

WILLIAM SHATNER as Captain James Kirk

One of the most sought-after young actors on TV, Canadian-born William Shatner also is well known to motion picture and Broadway audiences. On Broadway, he created the starring role of Robert Lomax in *The World of Suzie Wong* and co-starred with Julie Harris in *A Shot in the Dark*. He made his motion picture debut in *The Brothers Karamazov* (with Yul Brynner, Maria Schell and Lee J. Cobb); played the aide de camp to Spencer Tracy in *Judgment at Nuremberg*; starred with Patty McCormack in *The Explosive Generation*; and was a member of the all-star cast of MGM's *The Outrage*. TV viewers have seen him on such top dramatic series as *The Man From U.N.C.L.E.*, *Dr. Kildare*, *The Defenders*, *Alfred Hitchcock Presents* and *The Bob Hope Chrysler Theatre*.





THE SERIES CO-STARS

MR. SPOCK

Science Officer Spock has a precise, logical turn of mind inherited from his father (a native of the planet Vulcanis, who married an Earth woman). Because Vulcans regard any display of emotion as a breach of good taste, Spock rarely betrays what he is thinking or feeling, either by his speech or his facial expression. He cannot, however, mask his cat-like curiosity about everything of alien origin. This sometimes proves to be his Achilles heel.

LEONARD NIMOY as Mr. Spock

Soon to be seen with Rock Hudson and Salome Jens in John Frankenheimer's upcoming Paramount release, *Seconds*, NemoY has played dramatic roles in a long list of top television shows. He also is well known on the West Coast for starring roles in critically acclaimed stage productions. TV viewers have seen him recently in *The Man From U.N.C.L.E.*, *The Virginian*, *Kraft Suspense Theatre* and *Combat*.

DR. PIPER

Chief Medical Officer Dr. Piper is the oldest and most experienced space traveler aboard the *Enterprise*. As head of the ship's Medical Department, Piper is responsible for the mental and physical health of the crew. His evaluation of the reaction of the men to the pressures of intergalactic space travel and the strange flora and fauna encountered on the planets visited will have a vital bearing on the conduct of each mission.

PAUL FIX as Dr. Piper

In a motion picture career that spans a 40-year period, Paul Fix has played important character roles in such top feature films as *The High and the Mighty*, *Giant*, *The Bad Seed*, *To Kill a Mockingbird* and the recently released *The Sons of Katie Elder*, starring John Wayne and Dean Martin. His many TV credits include *The Virginian*, *Gunsmoke*, *Profiles in Courage*, *The Bob Hope Chrysler Theatre* and *The Fugitive*.



OTHER MEMBERS OF THE ENTERPRISE CREW

ENGINEER OFFICER SCOTT is a wizard at repairing everything from the reading light on the captain's bunk to the ship's huge "space warp" engines. In an era of almost complete automation, his ability to fix things with a piece of baling wire or a rubber band has proven invaluable on more than one occasion.

JAMES DOOHAN as Scott. Moviegoers have seen James Doohan recently in *36 Hours* (with James Garner and Eva Marie Saint), *The Satan Bug* and *Bus Riley's Back in Town*. His TV credits include *Bonanza*, *The Virginian*, *Gunsmoke* and *The Fugitive*.

COMMUNICATIONS OFFICER ALDEN refuses to be awed by the demanding task of establishing and maintaining contact across vast distances. One of the youngest members of Kirk's staff, he also is one of this talented group's most respected technicians.

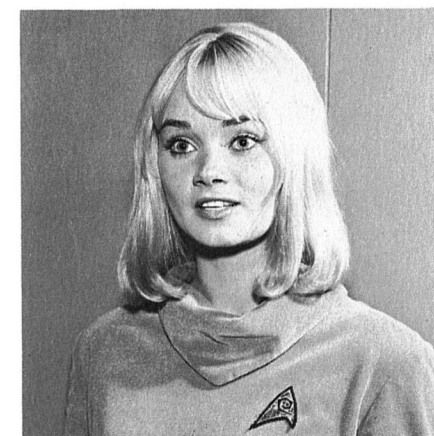
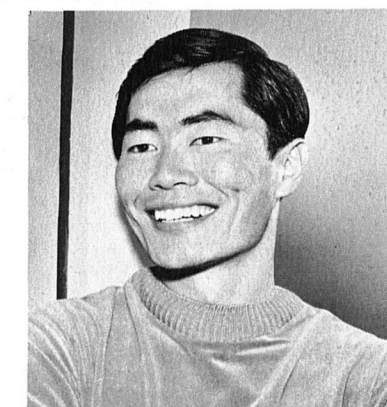
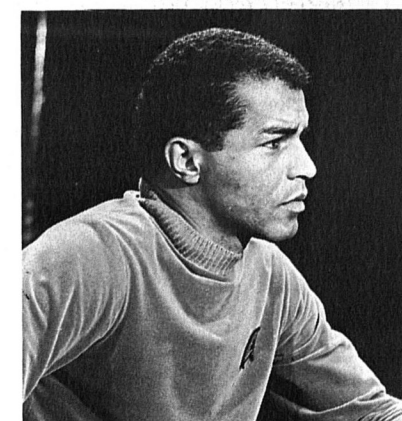
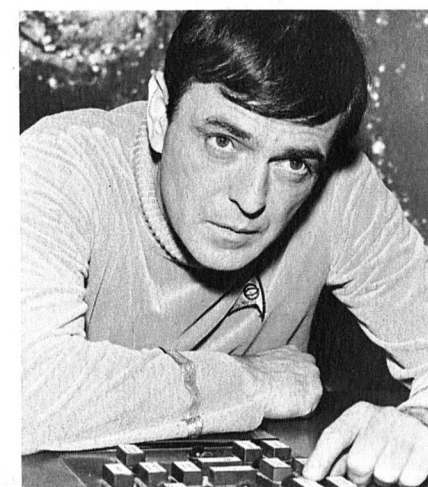
LLOYD HAYNES as Alden.

PHYSICIST SULU is the trim, soft-spoken chief of the *Enterprise's* Astro Science Department. Frequently it is his assessment of the conditions on unexplored planets that finally determines when and how they will be approached, or if they can be explored at all.

GEORGE TAKEI as Sulu. Since switching from the study of architecture to an acting career, George Takei has played in numerous feature films, including *Ice Palace*, *Never So Few*, *Hell to Eternity* and *PT 109*. In addition to being featured in several episodes of *My Three Sons*, he has appeared on *The Bob Hope Chrysler Theatre*, *Perry Mason* and NBC's new *The Wackiest Ship in the Army* series.

YEOMAN SMITH, who has drawn the important assignment of secretary to the Captain on her first mission in deep space, is easily the most popular member of Kirk's staff. A capable secretary and efficient dispenser of instant coffee, she also provides a welcome change of scenery for eyes that have spent long hours scanning the vast reaches of space.

ANDREA DROMM as Yeoman Smith. A budding television talent, flaxen-haired Andrea Dromm already has attracted wide attention for her "go-go" commercials in behalf of National Airlines. She is scheduled to appear in Mirisch-UA's new double-titled feature film, *The Russians Are Coming*, *The Russians Are Coming*, currently before the cameras with Carl Reiner, Jonathan Winters and an all-star cast.



PILOT GUESTS

Each week on STAR TREK, the U.S.S. Enterprise will encounter new adventures on the uncharted worlds and in the airless wastes of outer space. These adventures will be shared by other crewmen and passengers (played by guest stars), who will accompany the series regulars on these voyages of exploration.

GARY LOCKWOOD as Lt. Commander Gary Mitchell

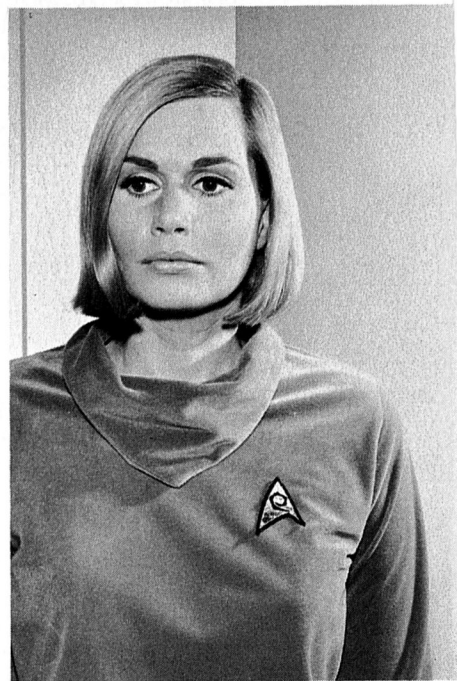
Best known to television viewers for his starring title role in The Lieutenant series, Gary Lockwood is regarded generally as one of Hollywood's fastest rising young actors. In addition to his own series, he has appeared on 12 O'Clock High and in such major feature films as Jerry Wald's Wild in the Country and Elia Kazan's Splendor in the Grass (with Natalie Wood and Warren Beatty).

SALLY KELLERMAN as Dr. Elizabeth Dehner

A tall, statuesque blonde, who made an impressive TV debut on The Outer Limits, Sally Kellerman since has scored with a number of important roles on such series as The Rogues, Ben Casey, 12 O'Clock High and The Bob Hope Chrysler Theatre. On the last named series, she starred opposite Rod Steiger in the widely acclaimed Rod Serling teleplay "A Slow Fade to Black."

PAUL CARR as Lt. Lee Kelso

One of TV's busier young performers, Paul Carr recently has played important roles on Gunsmoke, Voyage to the Bottom of the Sea, 12 O'Clock High and A Man Called Shenandoah.



THE PROGRAM AND ITS CREATORS

Program Type: Full hour, full color, filmed adventure-drama set on a space ship of the future.

Producing Company: Gene Roddenberry's Norway Productions in association with Desilu and the NBC Television Network.

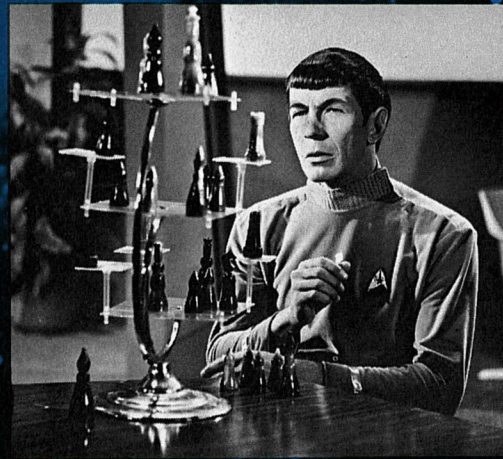
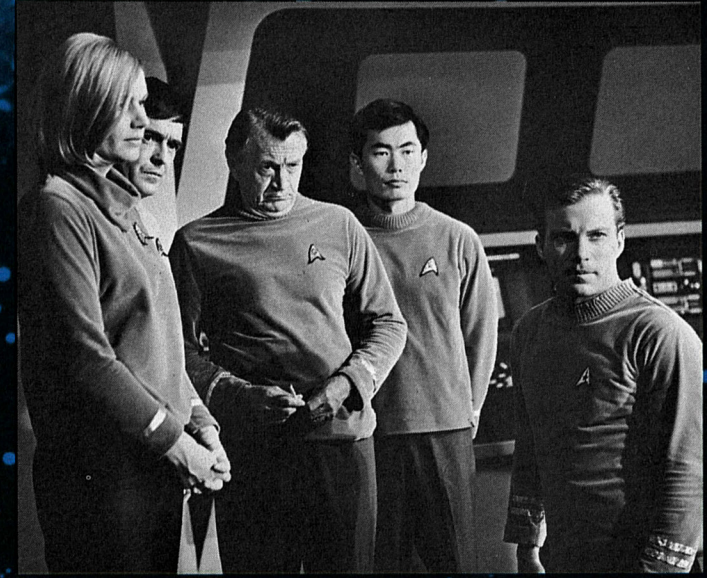
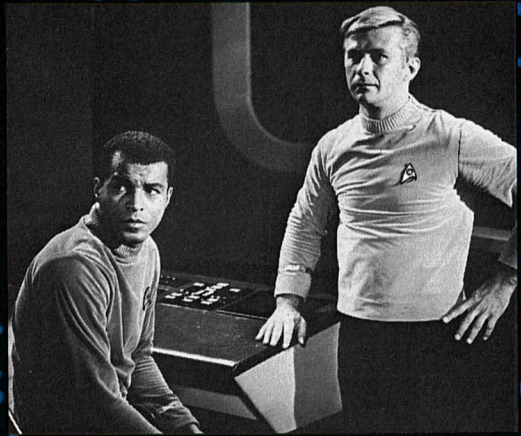
Series Creator/Producer: GENE RODDENBERRY. Gene Roddenberry has been associated with an impressive roster of network dramatic series as a writer, and more recently, as a producer. His writer credits include such shows as Dr. Kildare, Have Gun—Will Travel, The Dick Powell Show and The Lieutenant (which he also created and produced). One of the episodes Roddenberry wrote for Have Gun—Will Travel, while he was serving as head writer for that high-rated series, won him the 1959 Writers Guild of America award for "best western script." Concurrently with his STAR TREK assignment, Roddenberry is producing the pilot of Police Story (another adventure series of his own creation) for NBC.

Pilot Director: JAMES GOLDSTONE. James Goldstone's steadily expanding portfolio of major TV directing credits includes episodes of The Man From U.N.C.L.E., Dr. Kildare, The Eleventh Hour, The Fugitive, Perry Mason, Rawhide, Voyage to the Bottom of the Sea, Burke's Law and The Wild, Wild West.

Pilot Writer: SAMUEL A. PEEPLES. A life-long science fiction buff and author of a score of hard cover and paperback novels with a world-wide sale of over nine million copies, Samuel A. Peeples has written scripts for most of TV's top westerns. He also produced The Tall Man on the NBC Television Network for two years. Peeples' latest home screen writing assignments include teleplays for two of the current season's new entries in this perennially popular genre, A Man Called Shenandoah and The Legend of Jesse James.

NBC TELEVISION NETWORK

Note: The program described in this booklet is subject to availability and does not represent a commitment.



NBC TELEVISION NETWORK

