

BEWARE THE BIRD—Spacemobile lecturer Jim Poindexter has discovered the best thing to do for a baby mockingbird fresh from the nest is to leave it alone. Or, if you do try to rescue it, be sure to have readily available a plastic space helmet like the one Poindexter uses in his talks to school kids in the MSC area. The mother mocker, moving almost too fast for the photographer (that's her just below the globe of the sidewalk lamp—look hard), buzzed Poindexter until he retreated, helmet and all.

Aerospace Mechanisms Symposium To Be Held Here September 7 and 8

The 7th Aerospace Mechanisms Symposium, sponsored by the California Institute of Technology, Lockheed Missiles and Space Company Inc. and NASA, will be held here September 7 and 8.

This year's program is expected to deal with aspects of the about-to-end Apollo program as well as the three upcoming manned space programs—Skylab, Apollo Soyuz Test Project, and Space Shuttle.

Papers to be presented have been selected to include coverage of failures and problems encountered with actual flight hardware.

Papers were submitted by MSC and industry personnel and by authors from two foreign countries, England and Russia.

The symposium, to be conducted in the Building 1 auditorium, is open to attendance by

Roundup Deadline

This is the Roundup's occasional reminder that Swap Shop ads should be in the editor's hands no later than 5 o'clock Thursday the week before publication — that's 8 days before the paper is distributed — and publicity and news stories by Monday of publication week.

MSC and contractor personnel.

Pre-registration can be done through Gordon Rysavy, mail code EW6. A \$5 fee is required for participation in the social activities connected with the symposium.

For further information contact Rysavy at MSC extension 3445 or William Rogers at 3375.

NASA and NR Ink Shuttle Pact

NASA and North American Rockwell Space Division have signed a letter contract authorizing the firm to proceed with the development of the Space Shuttle.

Signing for the government at Space Division in California was Henry P. Yschek, MSC contracting officer, and for NR was John J. Roscia, corporate vice president and general counsel.

The letter provides North American authority to proceed with orbiter work while the government and the contractor negotiate a definitive contract.

NASA also obliged \$12,300,000 as the initial funding under the contract which has been assigned number NAS9-1400.

Don't Forget New Window Stickers

Don't forget that starting Monday those blue rectangular windshield decals no longer will get you an automatic wave through the MSC and Ellington gates.

The new Apollo/Skylab command module-shaped stickers already should be on most car windshields but, judging from the scene in several parking lots, quite a few employees need to stop by Building 100 before quitting time tonight.

Some 800 years of federal service was represented in the 29 length-of-service awards given by MSC Director Kraft last week.

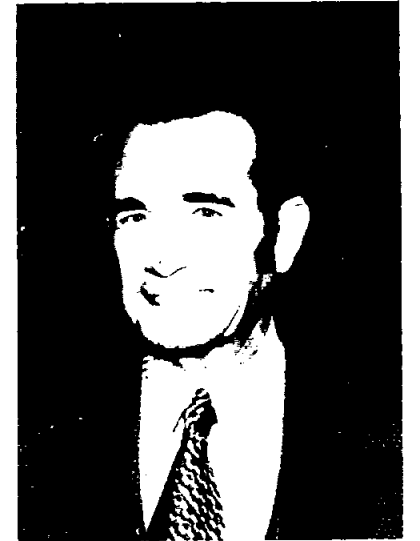
He presented one—a 40-year award to Leonard W. Loomis of Flight Crew Operations—on behalf of NASA Administrator Fletcher.

Two others, both 30-year certificates, were awarded in separate ceremonies to two center directors, Joseph V. Piland of Center Operations, and Martin L. Raines of Safety, Reliability and Quality Assurance.

The remaining awards went to: Robert Workman of Public

Affairs Office for 30 years' service;

John McClintock, Raymond LaPlante, Martin Hooper and Jakey Wood, 30 years, and Roy H. Field and Francis Davis, 25 years, all of Administration and Program Support;



LEONARD LOOMIS
40-Year Award

Stanley Buinski, 30, and Robert Parker and Luella Avery, 25, of Flight Crew Operations;

John Eggleston Jr., Elwyn Yeater, Lewis Lee, William Petynia and Katherine Stokes, 25 years, Engineering and Development;

Jackson Craven Jr. and Richard Andrews, both 25 years of service, both from Flight Operations Directorate;

Oral Smithwick, 30, and Arthur Booth Jr., Edwin Shropshire, Sammie Wilkins and Carl Romero, 25, Center Operations;

Arthur White, 30, and Preston Allen, 25, of Skylab Program, and Ida Daniel and Joseph DeCorte, both 25 years, SR&QA.

Picnic Politics Starts Getting Warm; EAA Ticket Vendors on the Loose

Tickets for the MSC picnic have been distributed to EAA representatives at MSC, and the candidates for ELECTION '72 at Camp Manison on September 23 are appearing on posters throughout the Center.

You soon will see the candidate for Office of International Affairs and Relations—who else but Jack King?

Job Corps Coordinator? Billie Schmidt!

A maximum of 5000 tickets will be sold this year for the annual picnic, which will have activities for all age groups.

Carnival booths will be available for the tiny tots; bingo for all ages; and a special teenager advisory group is arranging activities such as an egg-throwing contest and a special tricycle race.

The ever-popular dunk tank will have as targets some of the

prettiest MSC secretaries and our hardest astronauts.

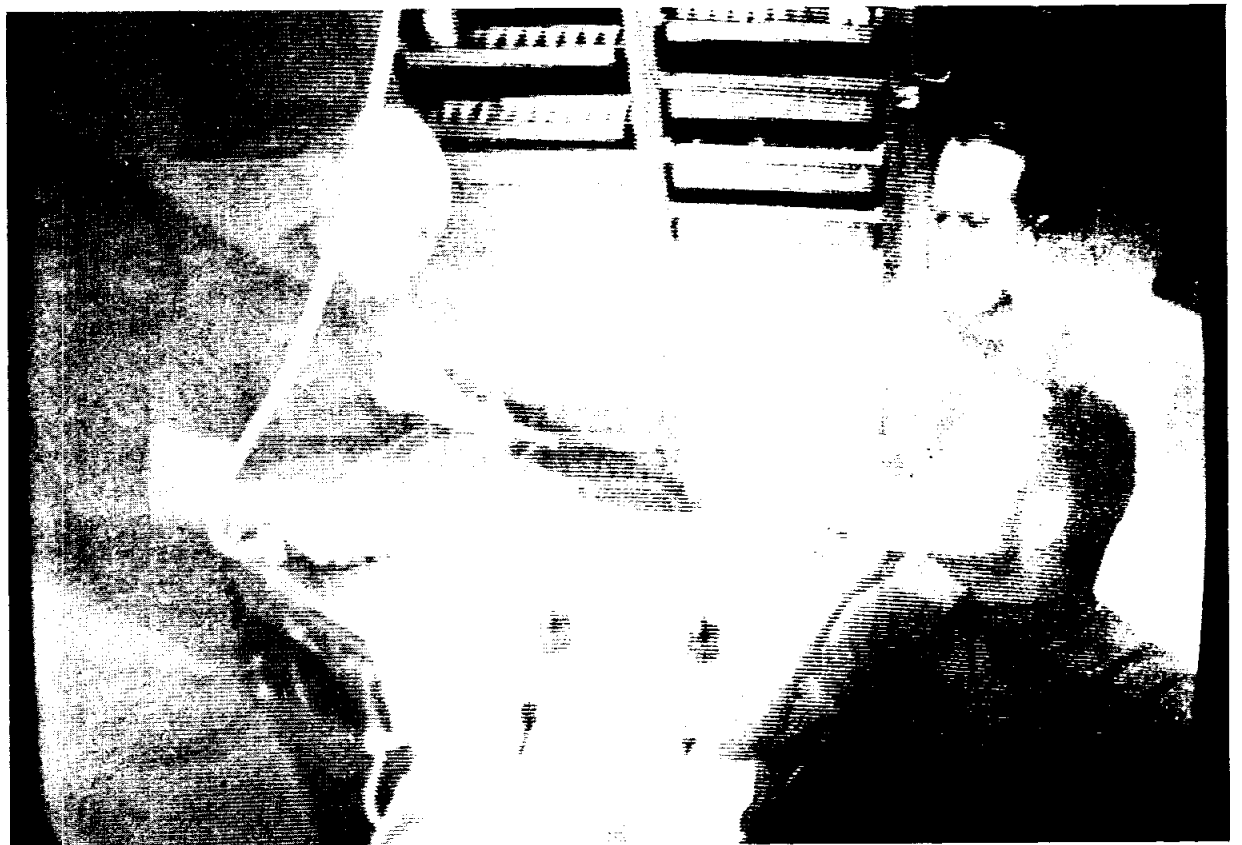
The proceeds of this activity, the only donation made at the picnic, will be given to the Harris County Boys Home, who received a color TV set from the proceeds last year.

The picnic is for the MSC family, including contractors, and receives a subsidy of \$10,000 from the Employees Activities Association to help meet expenses.

There will be hay rides throughout the day, a treasure hunt for children, a go-cart and motorcycle exhibition, and the Aquarians playing for dancing.

Jim Rayl is chairman of the picnic committee with Betty Cornett serving as co-chairman.

Don Gregory is responsible for Hurricane Avoidance, so plan on a sunny September 23 for the picnic.



REMEMBER THESE GUYS?—This is the 24th day in "space" for astronauts Thornton, Bobko and Crippen, the crew conducting the Skylab Medical Experiments Altitude Test in Crew System's 20-foot vacuum chamber. The photograph was taken from a TV screen during a press conference. The view is what the home audience can expect to see when Skylab actually orbits. Thornton is holding the microphone that connects him to the outside world and is explaining the dining console at which the three are sitting. Behind the crew is the food locker holding 56 days worth of space meals. So far the crew is not complaining about the menu but does find it a bit repetitious. To find out about some of the other activity helping the trio pass their time profitably, see page 4.

Skylab Flight Controllers Prep For Big Venture

Skylab flight controllers are getting primed for their role in the longest and most ambitious manned space venture to date.

A thorough familiarization with all the vehicles, vehicle systems and their operation is the prelude to simulations scheduled to begin late this fall.

The length of the Skylab mission, the multiplicity of complex systems and experiments dictates the need for more flight controllers.

Five complete teams of flight controllers will be trained to take care of these extra requirements.

The extra flight controllers also will provide periodic time off to the team members during the mission.

Implementation of this training for Skylab is provided by the Mission Simulation and Training Branch of Flight Control Divis-

MORE SKYLAB—As the teams of flight controllers ready themselves for the first Skylab flight, other support personnel check out the equipment to be used in training the teams. That's the Apollo telescope mount console, top left, being monitored front-to-rear by Robert Gaskell and Dennis Tibbs while Don Hill checks the environmental control system panel. Multiple docking adapter control panels are at the left. This trio, along with Gordon Wenneker, who isn't shown, are with Philco-Ford Corporation and are responsible for modifications to and maintenance of the trainers. At top right is Wanda Noah of Kentron (formerly Service Technology Corporation) at the earth resources experiment panel. Other panels are for orbital workshop power and for experiment support. Anne Flippen, also of Kentron but not shown, and Wanda provide the artwork, design and wiring documentation for the crew station trainers. The bottom picture has ATM instructors Dunham Swift of Philco and William Gravett of the MSC Mission Simulation and Training Branch at the instructors' console.



ion, utilizing many of the same methods used to train the Gemini and Apollo flight control teams.

The training includes programmed instruction, classroom briefings, video tape briefings, crew station familiarization, on-the-job training, culminating with mission simulations with the crewmen of Skylab.

When the actual mission is flown the flight controllers will feel, as past flight control teams have, that they have "flown" the mission many times before.

All flight controllers must have general knowledge of the Saturn IB and Saturn V launch vehicles, the Saturn workshop (Apollo telescope mount, orbital module, extravehicular activity equipment, selected experiments and Mission Control Center and Manned Space Flight Network Systems).

In addition, they are required to have specific detailed knowledge of spacecraft hardware, systems and their operation in the areas included in their particular discipline.

For most of the flight controllers it is somewhat like going

back to college.

Each man is issued texts for study on his own time. These provide basic information on spacecraft systems and technical subjects that do not change appreciably.

Current information on Skylab systems and scientific subjects is presented in classroom and video tape briefings.

The classroom sessions offer various levels of detail permitting those requiring an overview of the subject to attend only the first portion of the courses.

The flight controller normally receives the majority of his speciality training with on-the-job training. This generally consists of development of systems handbooks, mission control requirements, mission rules and operational procedures.

Practical training exercises providing the flight controller with visual as well as actual contact with the machines he is helping control from the ground is provided by the crew station trainers (CST).

The crew station trainers familiarize the flight controller with the location and function of all controls and displays with emphasis on the physical layout of control and display panels, general spacecraft system functions and associated terminology.

Actual physical constraints of the real crew station are accurately portrayed in the command module CST, while the Saturn workshop CST accurately represents the panel configuration but not their relative locations.

The controls and displays are dynamically responsive as in the

manned flight vehicles.

Practical application of systems management with emphasis on location, identification, configuration and interaction of switches, circuit breakers and displays is provided the flight controllers in the crew system trainers.

The flight controllers also evaluate crew checklist procedures and familiarize themselves with the physical activities associated

with specific periods of activity in the mission profile.

The final product of all this training is a flight control team and flight crews moulded through the medium of a simulated mission environment, commonly referred to as simulations.

Simulations in Mission Control Center encompass the total interrelationships expected to be

(Continued On Page 4)

ROUNDUP

NASA MANNED SPACECRAFT CENTER

HOUSTON, TEXAS



The **Roundup** is an official publication of the National Aeronautics and Space Administration Manned Spacecraft Center, Houston, Texas, and is published every other Friday by the Public Affairs Office for MSC employees.

Photographer: A. "Pat" Patnesky

Roundup Swap-Shop

Swap Shop advertising is available to MSC and on-site contractor personnel. Articles or services must be offered as advertised, without regard to race, religion, sex or national origin. Ads should be 20 words or less, including home telephone number. Name and office code must accompany, but need not be included in, ad copy. Typed or printed copy must be received (AP3 Attn: Roundup) by Thursday of the week before publication.

HOUSEHOLD ARTICLES

Duncan Phye mahogany drop-leaf dining table w/ 4 chairs & custom pad, x/nt cndn. Davis 333-4275.

Italian modern sofa & 2 chairs w/ gold upholstery, also coffee table & lamps. 554-6001.

Westinghouse no-frost refrig approx 14 cu ft \$50. 944-2663.

Pre-pasted vinyl mural, 5 panels 10' wide w/ 36" matching paper, will cover 18' wall of average height room, picture southern plantation in chiffon blue. Gessner 333-3159.

Custom stereo, early Amer component & speaker cabinets. Sansui receiver, Sony tape, Coral spkrs, seperately or all for \$395. Cobb 333-4109.

Metal beige color Samonik card table w/ 4 chairs \$20. Goodman 488-1458.

Six reprod. Hedgecock chairs, 2 arm, mahog fin \$100, two solid mahog repro tea tables \$75, Centennial Duncan Phye dresser mahog w/ inlay \$40, mahog repro drum table \$7, 22" lawn mower \$10. Laughon 333-4036.

Sofa, seldom used custom made 7' blue/green brocade \$125, gold & white table lamps \$25 pr, Eureka upright vacuum cleaner \$15, antique blue wooden bedroom chair \$5. Carol 334-4305.

Think Picnic!

Danish modern dining room set, Heywood Wakefield table w/ 3 leaves & 6 chairs, solid oiled ash \$135. 471-4342 after 6.

VEHICLES

65 Chevelle Malibu V8 4-dr, air, std, gd tires, x/nt cndn \$575. Hanisch 554-6484.

66 Jaguar XKE 4.2 litre cpe, Navy blue w/ grey leather interior, chrome wire wheels \$1900. Thibodeau 747-5638.

56 Chev 8 cyl, std, x/nt cndn. Matties 944-3586.

Go-cart 7 hp West Bend 2-cycle eng, x/nt cndn \$80. Matties 944-3586.

71 1/2 Honda SL 175 Motor Sport, 1800 mi, like new w/ car carrier, metric sockets \$550. 488-5389.

66 Mustang hdtpr 6 cyl, auto, air, radio, x/nt cndn 1 owner 43000 mi \$875. 488-4005.

64 Dodge pickup V8 4-spd, gd tires, low mi, long wheel base \$525. Morton 946-4752.

70 Plymouth Valiant 6 cyl 225 cu 4-dr, auto, air, radio. Korn 488-1921.

Go-car gd cndn, rcnt overhaul, 2 new tires \$75. Simpson 471-2059.

Mobile homes, two 8 x 30 w/ 1 bedroom, one 8 x 46 w/ 2 bdrm, all have air, see at 2824 Randolph Rd, Pasadena. 946-0539 or 944-3166 after 6.

64 Olds F85 V8 4-dr, air, radio, all pwr options, worth \$350. Gammon 471-2542.

70 Fiat Spider 850 roadster, economical sports car \$1250. Johnston 944-0862.

70 Suzuki 125 Stinger, new battery, xtra tire, 3 helmets \$290. Mark 488-5037.

70 Delux mobile home 2 bdrm, carpet, cent air & heat, cost \$7500, accept best offer over \$5700. Wilkinson 422-9140 Baytown.

68 106 SS motorcycle, licensed, inspected, rcnt overhaul, incl spare parts \$175. 488-6737.

66 Pontiac Catalina V8 sta wgn, auto, air, pwr steer & brakes, vry clean, new battery, x/nt run cndn \$965. Brown 921-7212 or 772-9802.

70 Dunebuggy Corvair AT conv hdtpr Calif custom. Bullock 774-6602.

70 Suzuki 250cc 5-spd Enduro, luggage rack, min: cndn \$450. Bowling 332-2964.

61 Buick Splc sta wgn, air, heat, radio \$250. 333-2185.

62 VW needs xhaust, gd work car \$225. 554-4206.

Gold Honda Minitrail 70 & helmet x/nt cndn \$250. Blackshear 946-8312.

Save \$1000 on 17' self-contained travel trailer 1 yr old, x/nt cndn \$2350 complete. Pratt 479-5152.

63 Chrysler 300 4-dr hdtpr, air, auto, pwr brake-steer-window, buckets, radio, gd tires, 63,000 mi, 1 owner \$575. York 488-2188.

71 Honda 100 CL x/nt cndn. Chady 491-1502.

Kawaski Trail Boss \$250. Beers 482-1462.

69 Buick Wildcat 4-dr hdtpr, all pwr, air, FM stereo \$2250. Cobb 333-4109.

Honda Mini-trail 50 pfct cndn \$100 below new cost, 3 spd. Vetter 488-0275.

64 VW 67,000 mi, gd shape \$400. Stephenson 554-2420 after 5.

BOATS

16' Larson Shark, 85hp Johnson ob, galv trailer, x/nt cndn. 334-2454.

16' ski boat, hull complete w/ Fiberglas, wood & plans to finish top & inside \$150. 471-4342 after 6.

64 Lone Star 18' day cruiser w/ 90hp Johnson & big wheel trailer \$1475. Sauter 333-4641.

Luxurious 16' speedboat, 120 hp ob, trailer & equip incl pro ski-tow bar, 71 model in mint cndn, reduced to \$2995. Bland 333-4580.

14' Hobie Cat w/ trailer, x/nt cndn \$1195. Bentley 333-3001.

MISCELLANEOUS

Manual typewriter \$35, stereo amp \$30. Teixeira 488-4412.

8" table saw w/ motor \$50, w/ out motor \$30, metal miter box w/ back saw \$10, edger needs motor work \$25, baby goodies, bassinet, bottles, etc \$10. Fulbright 944-8717 after 5.

Arnold Palmer golf set 14 clubs, Halmark bag, cart, new cndn \$125. Gentry 488-0405.

Brunswick slate snooker table all equip. 534-2507.

Electri-Maid electronic air filter for central air systems. 333-4629.

Peterson baby stroller x/nt cndn, cost \$30 sell for \$15. Hooper 488-4120.

Asahi Pentax Spotmatic 2 w/ fl.4 lens, cmptly new, never out of box \$250. Zweig 488-4142.

New handmade seashell afghan in browns \$35. 554-2329 after 5.

.300 Savage deer rifle fully equipped. Haines 926-4333.

Numerous paperbacks, predom detective & secret agent, 1 owner, sell for 1/2 list price. Worley 488-3294.

Baby playpen 7, metal hi chair \$10, stroller w/ wind screen & canopy \$10. Worley 488-3294.

Group Insurance: Group life & travel accident life, call NEBA, ext 5410.

Fly IFR Bonanzas w/ the Aero Club, transponder equipped P and K models \$18/hr wet plus \$25/mo dues. McCoy 483-5171 or Moncsko 483-4667.

Left-hand golf clubs, full set 1st flite pro model, yr old, cost \$300, yours for \$125. McAvoy 488-4083 after 5.

Sonar D-60 depth finder in orig carton, solid state, thru-hull fitting \$100. White 554-4472 Lg Cty.

Selmer Signet B-flat clarinet used 2 yrs, cost \$200 sell \$150 or trade for comparable flute. Horsman 333-2185.

Exakta VX 50mm f2.0 Biotar w/ 35mm wide angle, 135mm telephoto, pentaprism & waist level viewfinders, filters & leather-cases \$95. Handley 482-7041.

Conn trombone & case x/nt cndn, new \$160 asking \$95. Shows 334-2003.

Sony TC-155 Copycat open reel tape player vry gd cndn \$50. Musgrove 488-3966.

Conn E-flat Alto saxophone \$175. Lee 554-2129 Lg Cty.

Four 15" Jeep wheels w/ usable tires, \$40 all 4. Alford 334-2844.

PETS

Free kittens from good line of mousers, 2 wks old. 482-3989.

AKC samoyed pups, all shots. 534-2607.

Irish setter at stud, AKC registered. 334-3303.

AKC basset hound free to go home w/ fenced yd or open area for exercise, male, 6 yrs. 482-3963.

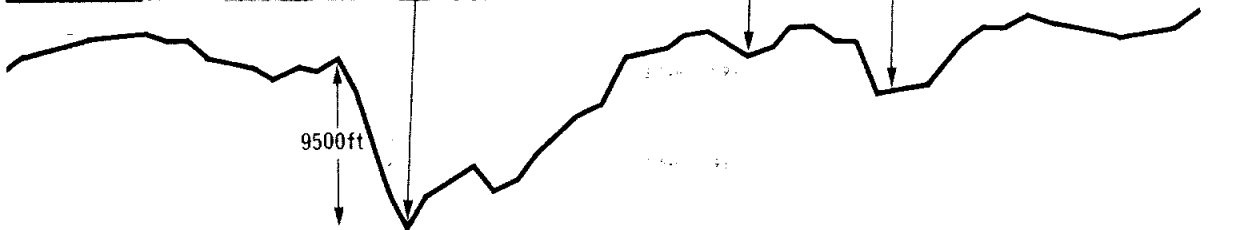
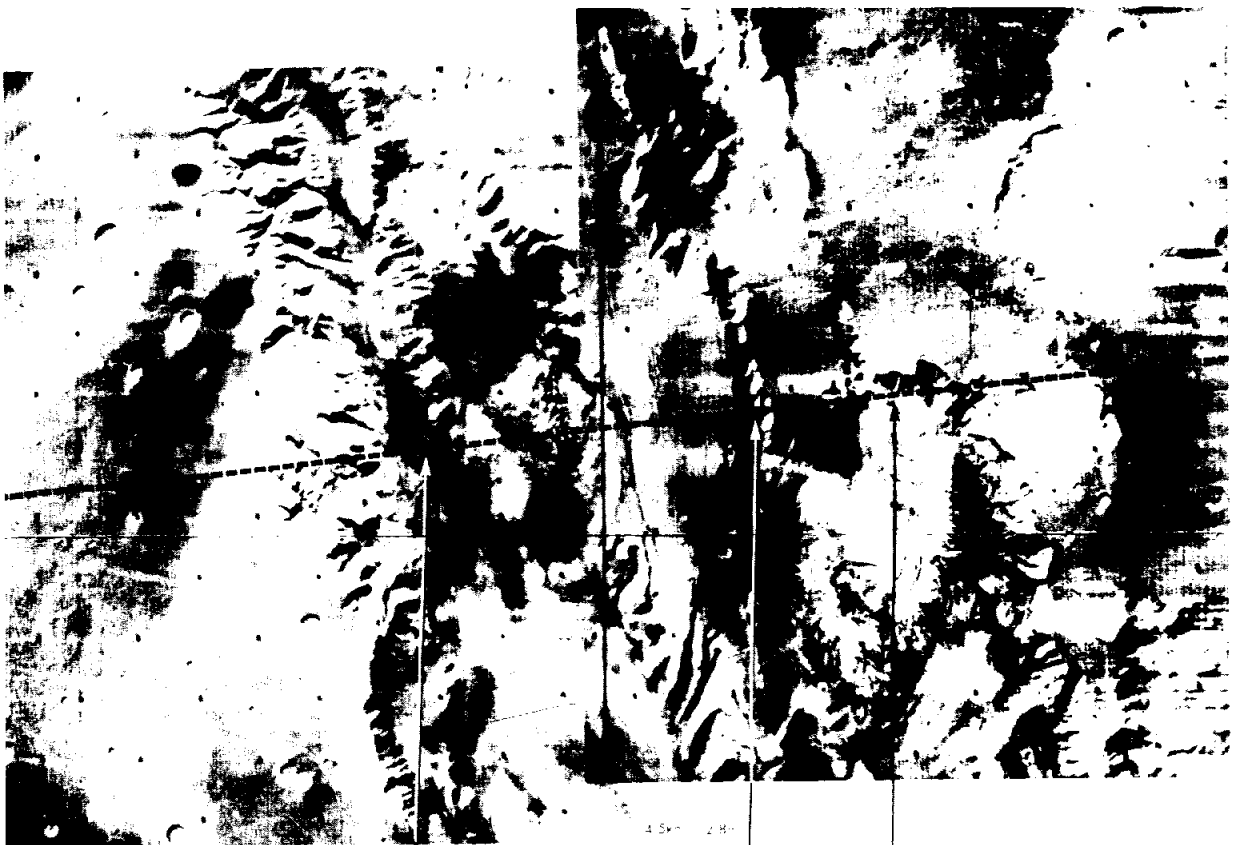
WANTED

1972 Texas deer lease in proven kill area. Hooper 488-4120.

Good practice piano. Gurley 534-3800.

Used 12' semi-V alum boat & reliable obm under 10hp. Ferguson 482-7910.

Audit helper for MSC Credit Union Supervisory Committee, 4 hr day, audit or acct



MEANWHILE, ON MARS . . .—While manned space flight activity continues to hog the limelight here, an unmanned craft continues to do a magnificent job at a distant planet. At Mars, perhaps the most likely candidate for man's next venture away from his home planet, Mariner 9 has sent back a photograph of wind-formed dunes (top photo) and one of a canyon twice as deep as Grand Canyon. The dune field in the floor of a 93-mile-wide crater in the Hellespont region appears as a black spot at left in the wide-angle picture of the crater (arrow). The similarity of size and direction of the individual dunes indicate they were formed by strong winds blowing from southwest. The canyon, in the Tithonus Lacus region, is estimated to be about 9500 feet deep, based on pressure measurements by the ultraviolet spectrometer aboard Mariner 9. The jagged line at the bottom represents the pressure measurements, which are translated into distances. The dotted line through the picture is the instrument's scan path across the surface.

experience reqd. Gerlach 483-2891 or 488-1348.

PROPERTY & RENTALS

Pasadena 3-2-2 nr schools on corner lot 15 min from MSC, equity & assume 5/4 FHA or new loan. 487-1656.

Rent beach house on Bolivar block fm Gulfside beach, \$50 weekend (Fri 1 pm - Sun 4 pm) \$100 week (Sun 6 pm - Fri noon). Leger 482-3978.

Glenbrook-Houston 4-2-2 brick, den, fire, liv-din, carpet, builtins, cedar fence, cent air/heat, 6 1/4 loan, by owner. 645-2731.

Lake Livingston wooded lot, subdivision w/ swim pools, utilities, st lites, paved. Vetter 488-0275.

3 bdrm, bath, liv, kit-din w/ builtins, cent heat, 2 a/c units, detach garage, 100 x 130 wooded lot Shoreacres LaPorte, avail immed \$17,000. Schnell 471-2378.

Friendswood 3-2-2 cent air, fire, near schools, 406 Avondale. 482-1437.

2-story colonial Nassau Bay, screened pool, fenced yard, 3/4 brick, many trees, xnt cndn. Gibson 333-3912.

Meadowbrook, 5410 Berryhill Ct., 3-2-2, den, all builtins, privacy, wooded. Washer & dryer. \$325. Howard 649-6488 or 645-7704.

El Lago 3-3-3 contemporary, trees, fenced, assume 6% loan or refinance. Ernull 334-2808.

Nassau Bay 3-2-2 1/2 brick, fire, landscaped, large wooded lot \$41,500. Nado 333-2258.

Small cottage 1 bdrm 1 bath, air units, refrig & stove, fully carpet. fenced, off Gulf Fwy 125 mo. Howard 649-6488 or 645-7704.

LATE ENTRIES

Want season tickets to Oilers games, block of 4 or will take 2. McCommis 488-2843 after 6.

Berkline reclining chair \$30, couch makes dbl bed \$40, glass front bookcase \$15.

70 Suzuki 500, orig metallic green, 40 mpg, x/nt cndn \$600. Corcoran 334-1878.

Want good home for friendly 3 yr small female dog w/ big brown eyes & floppy ears. Allgeier 333-4627.

71 Chrysler Conquerer 16' ski boat 70hp ob & big wheel tilt trailer, all accessories, cost \$3800, sac \$2300. Hereford 333-2568.

Seabrook 4-2-2 brick, LR & large FR \$26,500 or best offer. Newman 474-3497.

Craftsman 10" radial arm saw w/ stand, lk new, \$139. McCown 471-0716.

AKC top poodle 6 wk chocolate males \$125. Patterson 944-9826.

71 Kawasaki 500 Mach III 3500 ci pfct cndn \$825. Patterson 645-1746 after 6 or 944-9826.

70 Suzuki 500, orig metallic green, 40 mpg, x/nt cndn \$600. Corcoran 334-1878.

Want good home for friendly 3 yr small female dog w/ big brown eyes & floppy ears. Allgeier 333-4627.

71 Chrysler Conquerer 16' ski boat 70hp ob & big wheel tilt trailer, all accessories, cost \$3800, sac \$2300. Hereford 333-2568.

Seabrook 4-2-2 brick, LR & large FR \$26,500 or best offer. Newman 474-3497.

Craftsman 10" radial arm saw w/ stand, lk new, \$139. McCown 471-0716.

AKC top poodle 6 wk chocolate males \$125. Patterson 944-9826.

71 Kawasaki 500 Mach III 3500 ci pfct cndn \$825. Patterson 645-1746 after 6 or 944-9826.

16' fiberglass boat 60hp & big wheel trailer & equip \$525. 472-1425 after 5.

10' aluminum boat 3 hp eng & car carrying rack gd cndn \$75. Stonesifer 482-7643.

64 Triumph TR4 \$335. Bragg 337-2777 Dickinson.



Aero Club Ground School Repeat Starts Monday

The Aero Club is offering its private-pilot ground school again to MSC and contractor employees and their families.

Instruction based on the Sanderson audio-visual course starts Monday at 5 in Room 720 of Building 2.

Partially subsidized by the Employees Activities Association, tuition is \$20. The course also is included in the club's introductory solo flight program.

To register in the ground school or for information on the Aero Club, attend the first class or contact Bob Moncsko at MSC extension 4667.



Travelers Join Mouseketeers For Special Value

The Aerospace Employees Travel Club has become a member of Walt Disney's Magic Kingdom Club and is passing the benefits along to MSC and contractor personnel.

Membership cards, valid through December 31, are available from Employees Activities Association representatives on request and without charge.

The cards entitle the bearer to buy special-value ticket books at Disneyland and Walt Disney World.

The ticket books, not available to the general public nor without presentation of a properly authorized membership card, can be bought for the entire family on a single membership.



LOOK OUT, BORIS AND BOBBY—Skylab test astronauts Crippen, Bobko and Thornton are learning Russian, and Crippen is locked in a space-age chess game with one of his test directors, but the champ and the challenger in Reykjavik probably needn't worry about the competition. The Russian classes are being conducted by a Russian-born Berlitz employee, Mrs. Lilla Carlson, and are being televised via closed-loop into the orbital workshop mockup by camera man Lloyd Reynaud of Taft Broadcasting. In the bottom picture, Ken Snyder of Crew Systems Division ponders his next one-a-day move in the prolonged chess battle. Like Spassky-Fischer matches in Iceland, this game has its share of analysts—but none is commenting on the possible outcome of the MSC contest.

Skylab —

(Continued From Page 2)

experienced during an actual mission.

Emphasis is on validation of operational concepts and procedures, exercise of operational procedures and integrating the individual disciplines into a team operation.

Skylab simulations currently are scheduled to begin sometime in October in preparation for the launch of the orbital workshop next April, followed one day later by the launch of the first of three Skylab crews.

The first crew is scheduled to spend 28 days in the earth orbiting space station.

An interval of 60 days with the OWS unmanned will be followed by a second crew manning the station for 56 days. Another interval of 30 days unmanned and the final crew will man the station for another 56 days.

The manned portion of the Skylab mission will be concluded in December of 1973.

☆U.S. Government Printing Office 1972-779-575/3

NEBA Offers Travel Accident Life Insurance to Permanent Employees

Travel accident life insurance coverage of permanent employees is available through the NASA Employees Benefit Association for about two cents a day.

And for another penny or so a day, that \$25,000 life insurance coverage on all pleasure and local business travel can be increased an additional \$10,000 on husband or wife.

NEBA offers four travel accident life plans, with spouse coverage optional in each of the four. Coverage in each is \$25,000, \$50,000 or \$100 thousand, spouse coverage \$10 thousand.

The four plans are:
Personal and local business travel,

Personal and world-wide business travel,

Same as No. 2 but includes pilots and crew members on administrative and program-support flights, and

Same as Plan 3 but includes pilots and crew on proficiency flights.

For additional information contact: NEBA Office, 5410.

Explorer Post Help Still Needed

The Employees Activities Association still is looking for potential members and leader-committeemen for a NASA-sponsored Explorer Scout post.

Age of members is 14 through 21. Contact Dawn Hoyle, MSC extension 2921, to volunteer

Movie-Goers Get Bargain Tickets

MSC movie-goers can get a bargain rate to ABC Theatres—they include Clear Lake, Park View, Santa Rosa, Alabama, Tower and others—if they act before September 1.

The tickets, at a dollar each, are good through next May 31. They are available through Dawn Hoyle, Code AH7, Room 161 in Building 2, but she needs the buyer's name, mail code and office extension, number of passes wanted, and cash or check.

The tickets will be ordered September 1 and should be available about the 15th.

The passes are not good during road show engagements.

Each pair of tickets ordered will get the buyer a free Christmas card.

Bowling League Organizing Meet Set for August 24

The organizational meeting for the 1972-73 Jimmy Warren Memorial Bowling League is scheduled for next Thursday, the 24th, in the Building 1 auditorium at 4:55.

Team captains or their representatives and any employee interested in joining a team or forming a new one are invited to attend.

For additional information: Nick Jevas, extension 2741.

Boating Safety Course Scheduled By CG Auxiliary

A three-lesson course in boating safety, open to MSC and contractor personnel, is scheduled at the Harris County Clear Lake Park building August 23, 24 and 30 and 7 to 9 p.m. by the Coast Guard Auxiliary's Flotilla 68.

The course covers equipment, government regulations, first aid, a courtesy motor boat examination and qualification for decal.

There is no age limit on attendance.

For further information contact: Bailey at MSC extension 7581 or at 334-1623.

EAA Reps Have Ice Show Coupons

Discount coupons for Ice Capades tickets are available from EAA representatives.

The coupons are worth a dollar off regular prices on adult tickets for all shows September 7-13 at Sam Houston Coliseum.

Youngsters under 16 can use the coupons for half-price admission to all but the Saturday and Sunday shows.